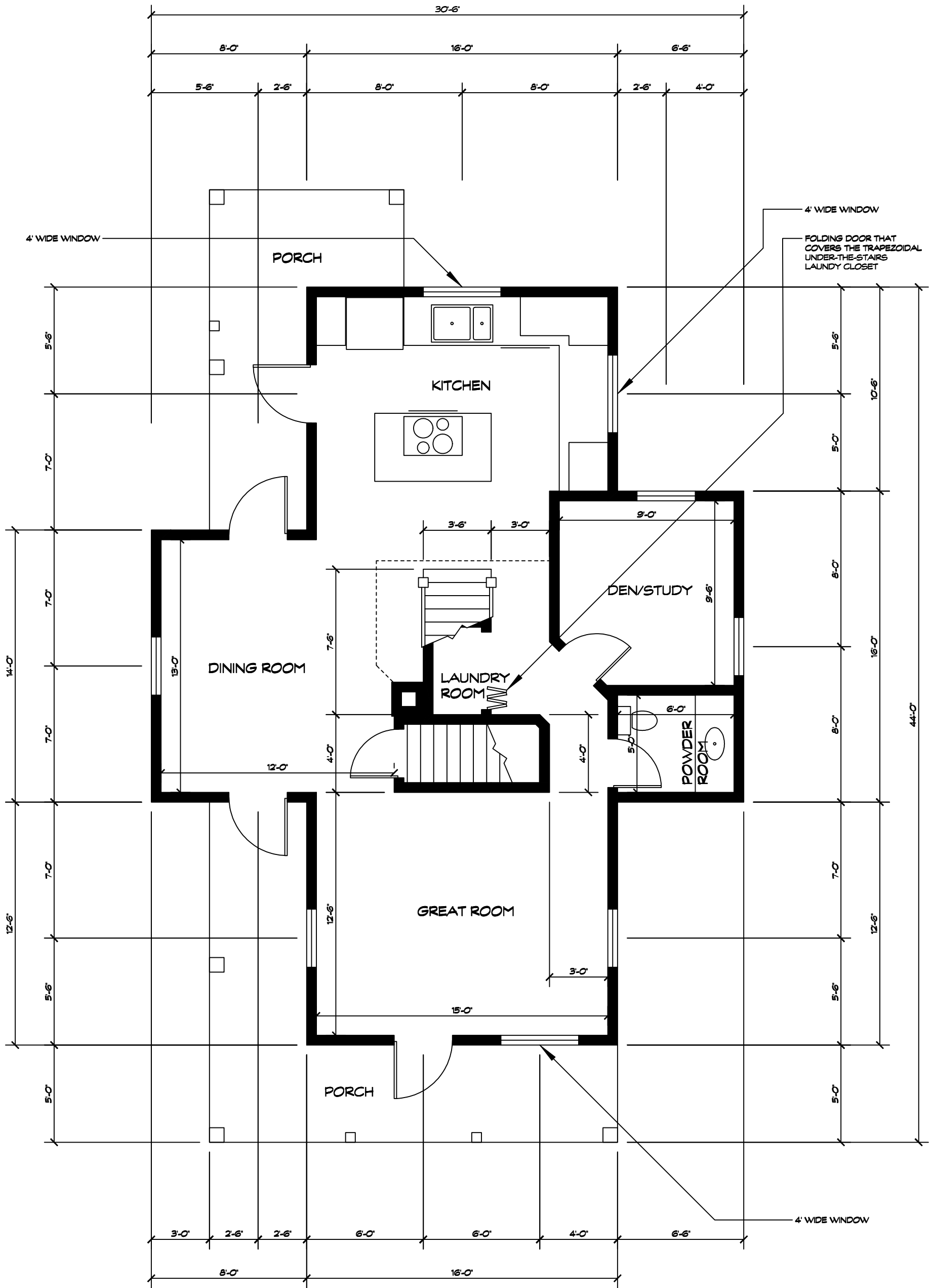


# FLOOR PLAN - MAIN HOUSE - 1st FLOOR

 1" = 4'-0"

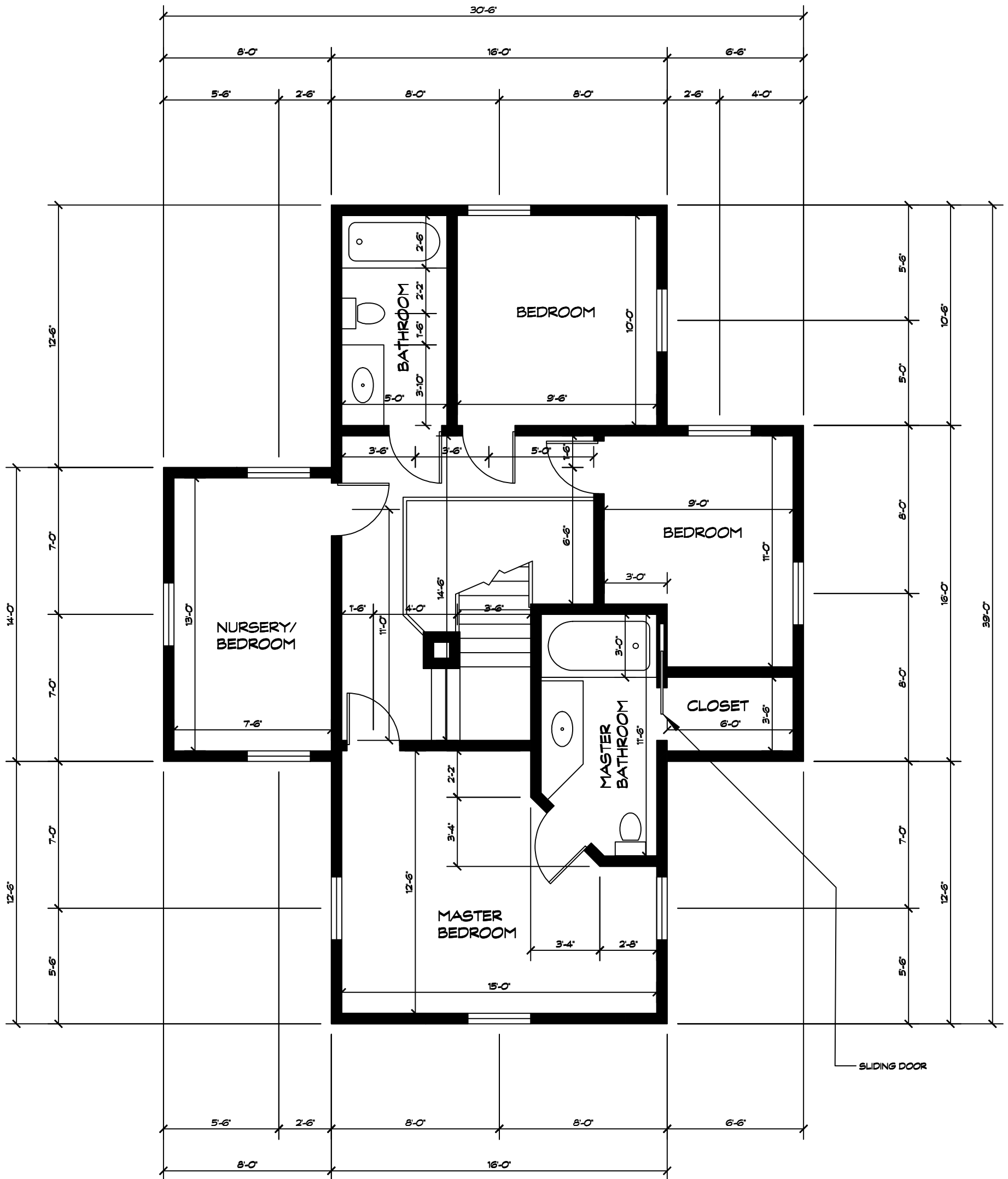


## GENERAL NOTES

- Unless otherwise noted, all windows are 3' wide
- All interior doors are 2'-6" wide
- All exterior doors are 3' wide

# FLOOR PLAN - MAIN HOUSE - 2nd FLOOR

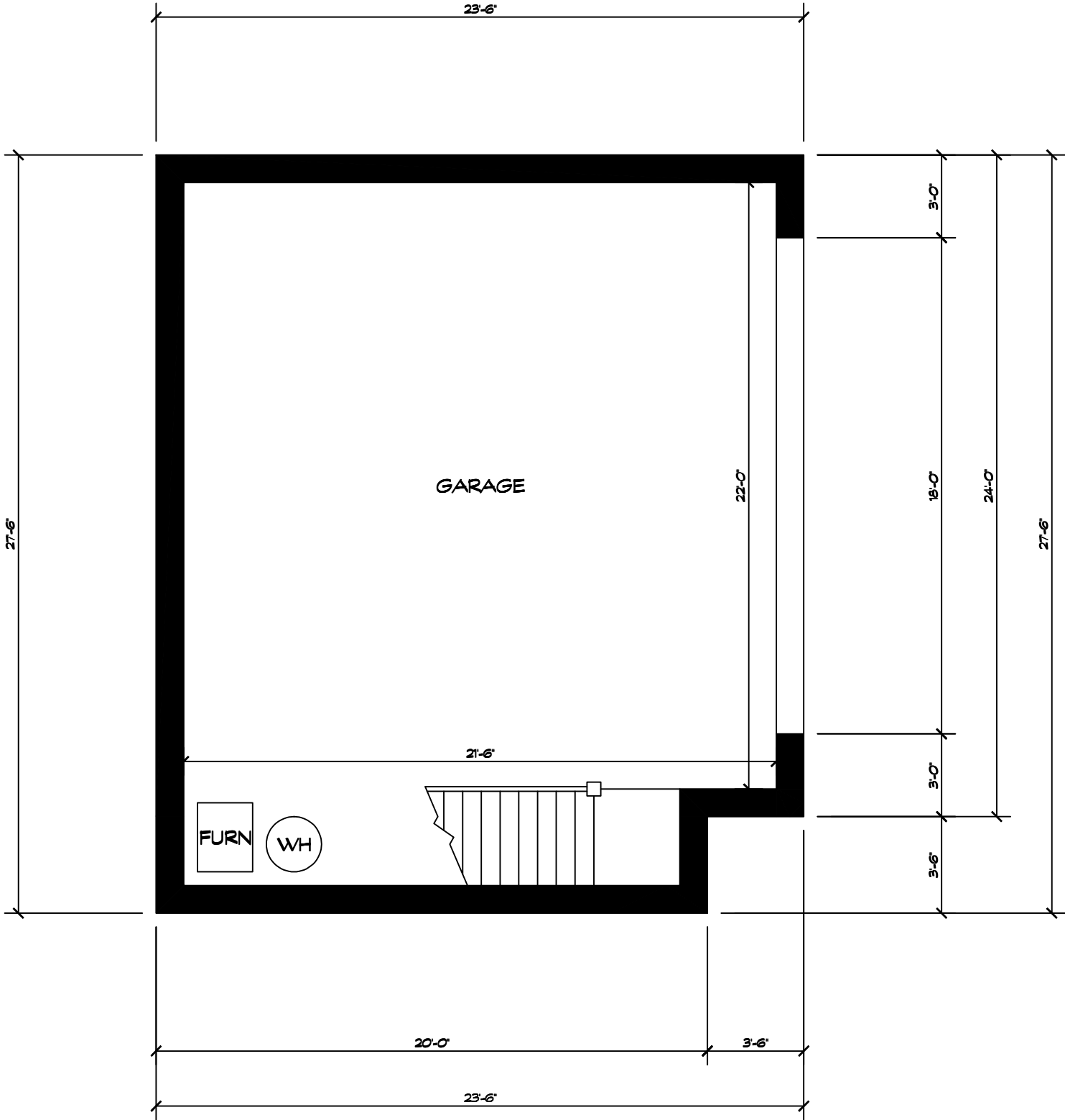
 1" = 4'-0"



**GENERAL NOTES**  
 All windows are 3' wide  
 All doors are 2'-6" wide

# FLOOR PLAN - MAIN HOUSE - GARAGE FLOOR

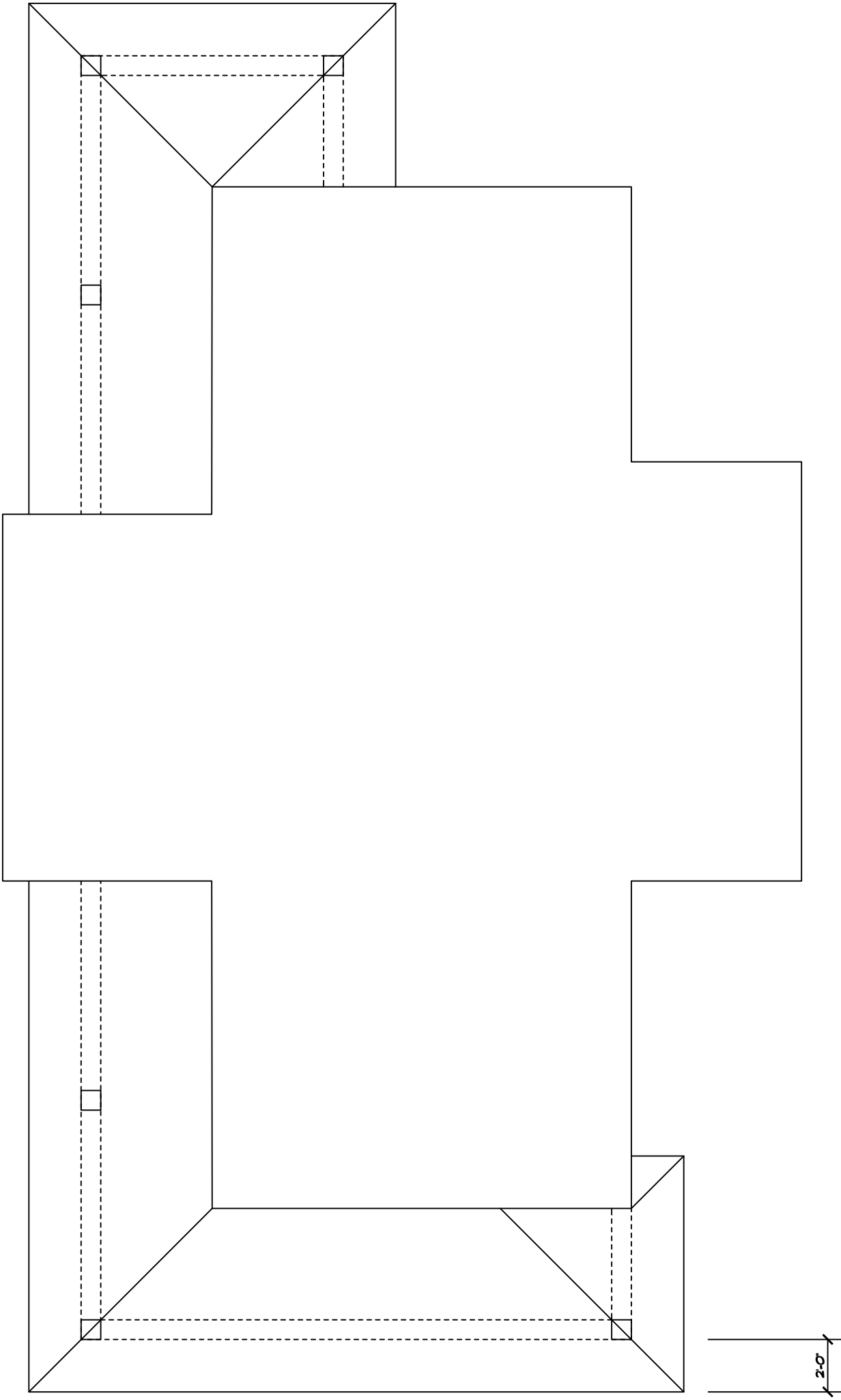
 1" = 4'-0"



# ROOF PLAN - MAIN HOUSE - 1st ROOFLINE

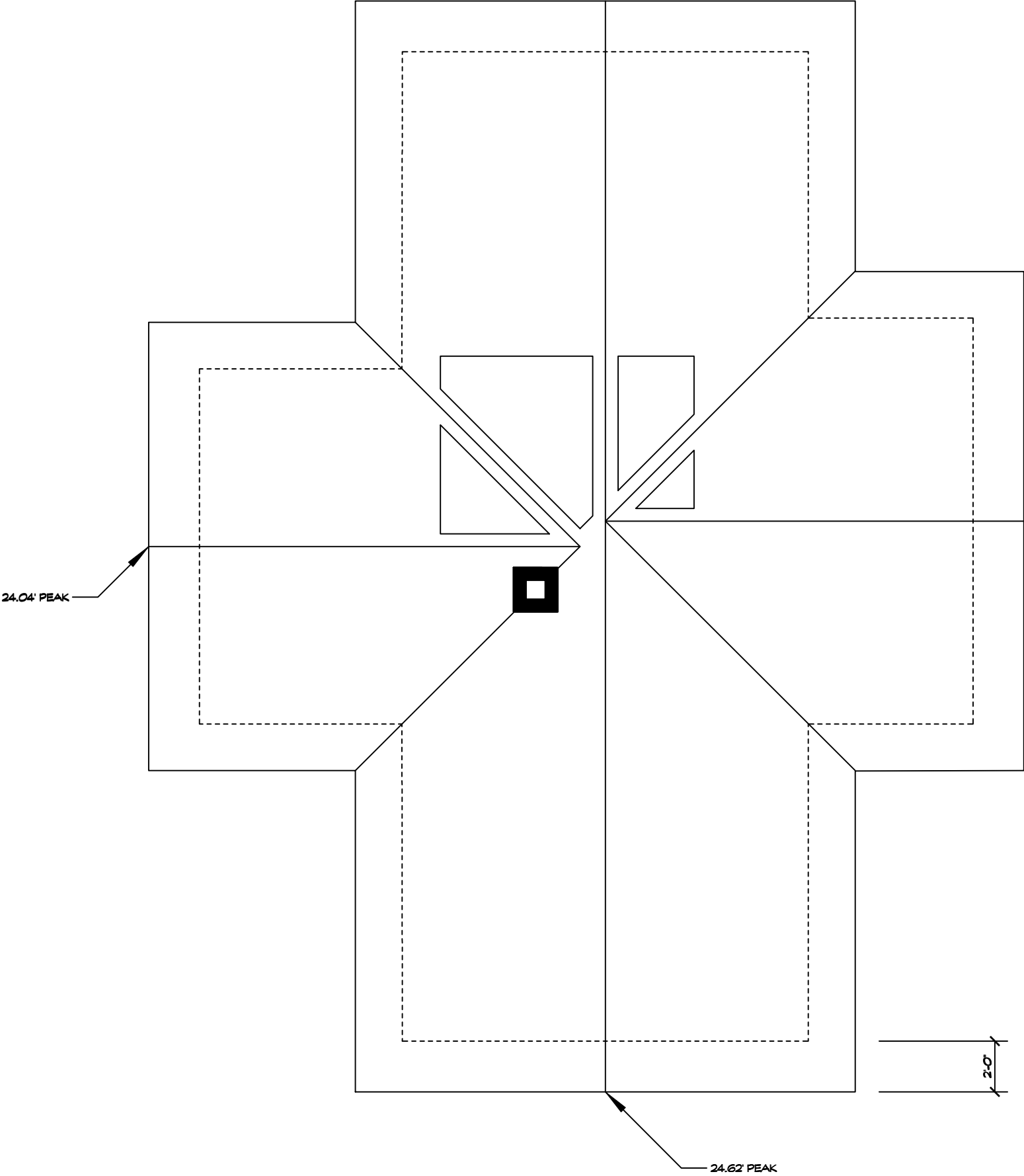


1" = 4'-0"



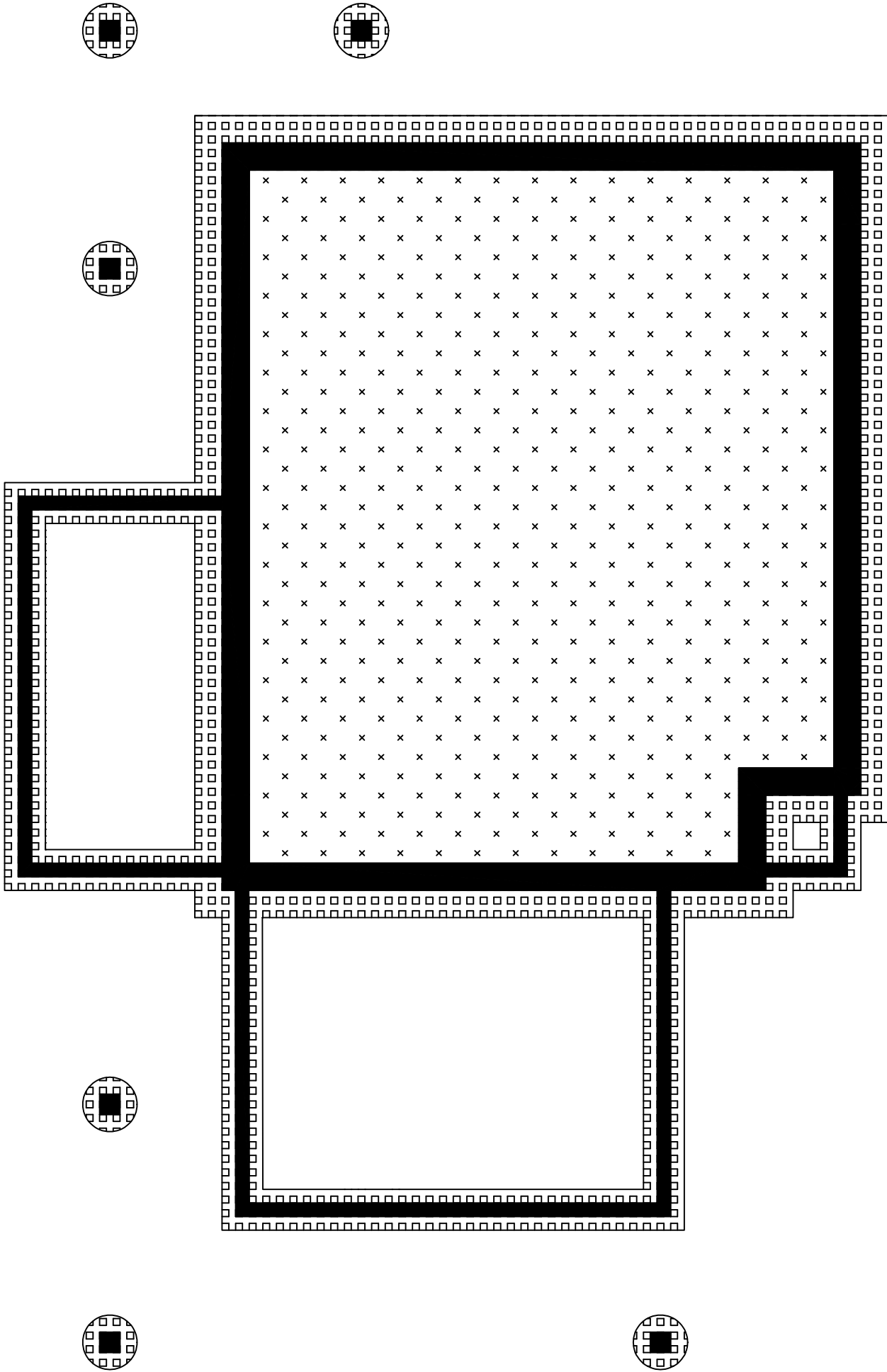
# ROOF PLAN - MAIN HOUSE - 2nd ROOFLINE


 1" = 4'-0"




# FOUNDATION PLAN - MAIN HOUSE

 1" = 4'-0"

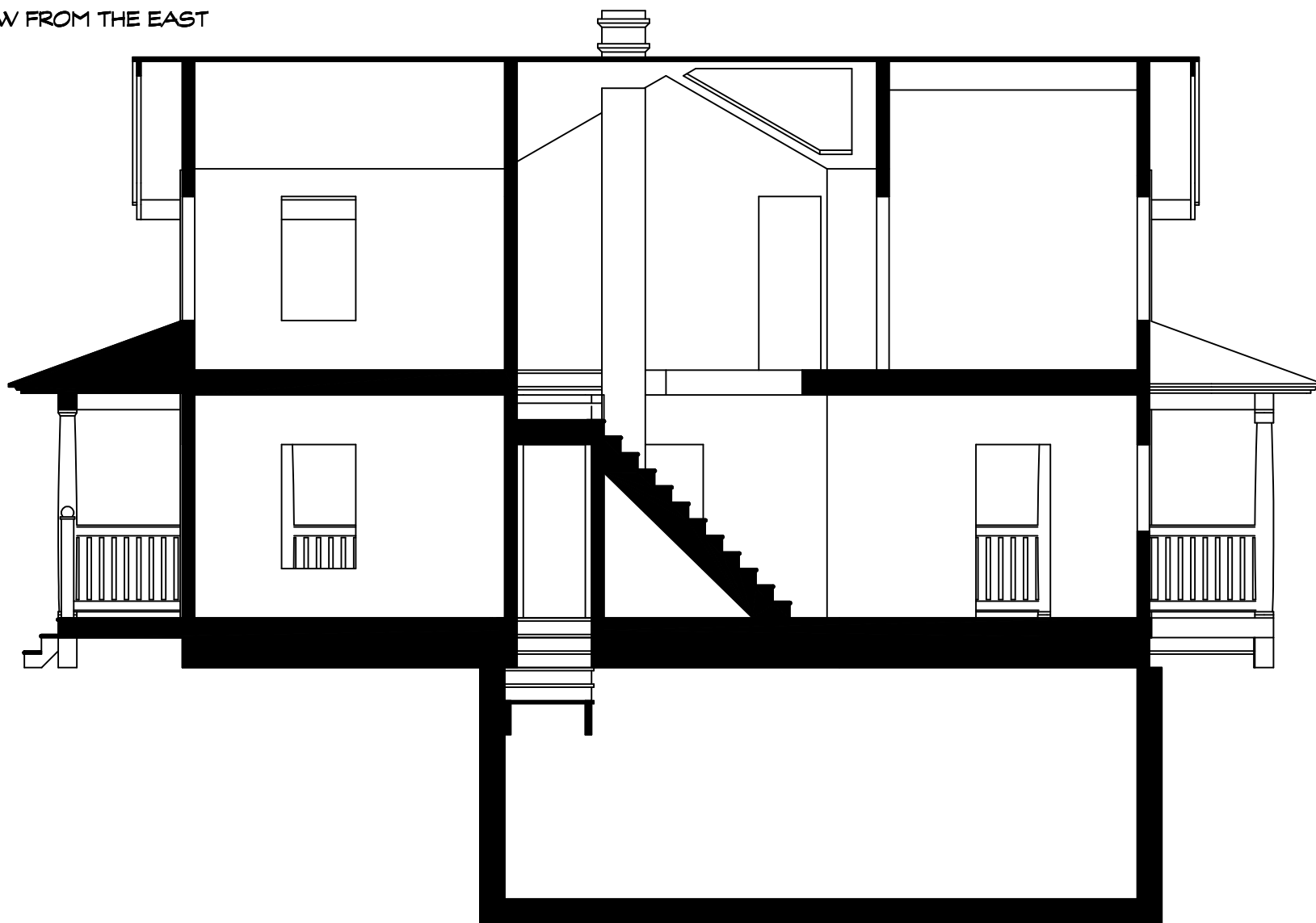


-  = FOUNDATION
-  = FOOTER
-  = GARAGE FLOOR

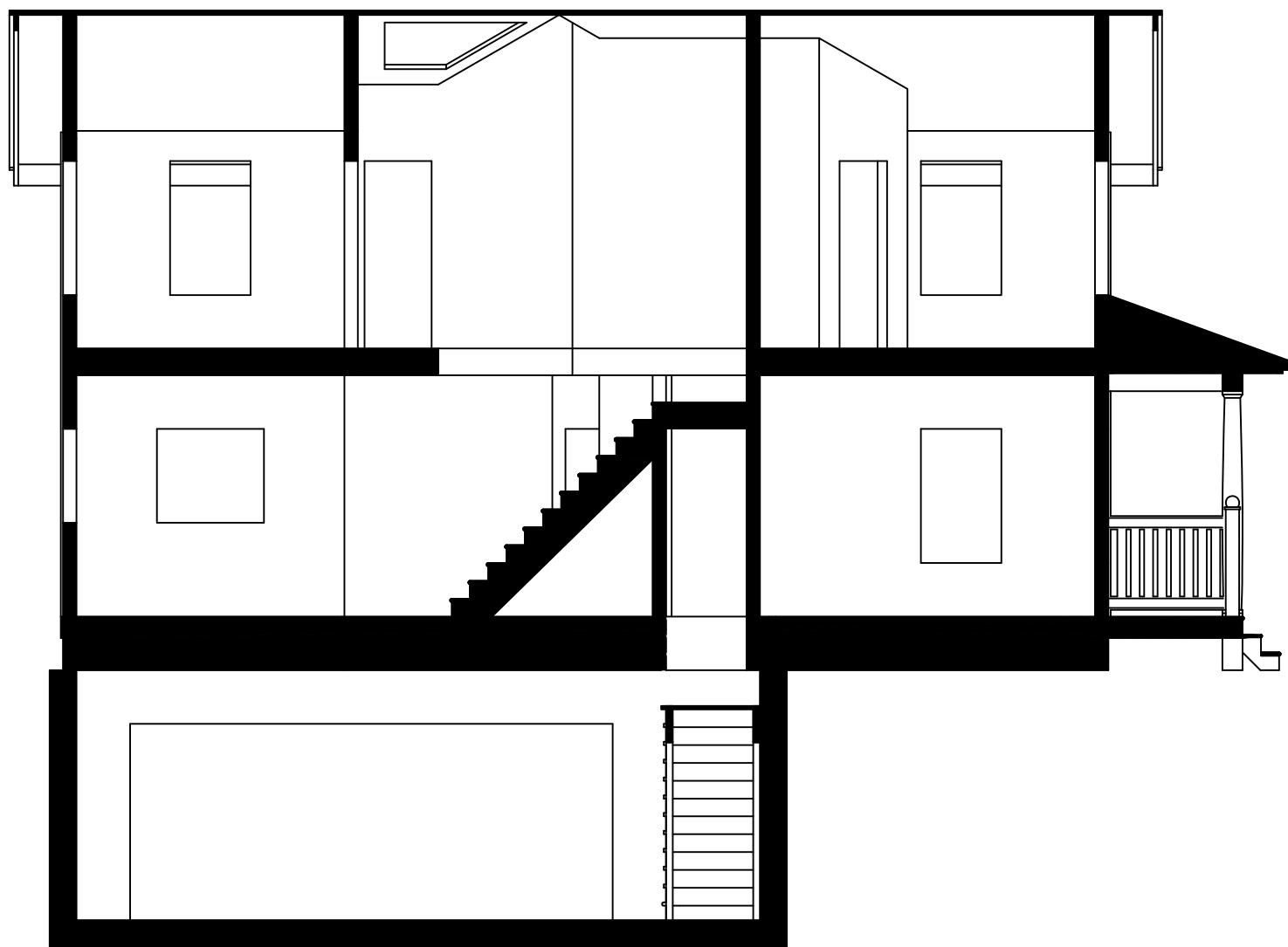
# SECTION PLAN - PAGE ONE

 1" = 10'-0"


VIEW FROM THE EAST



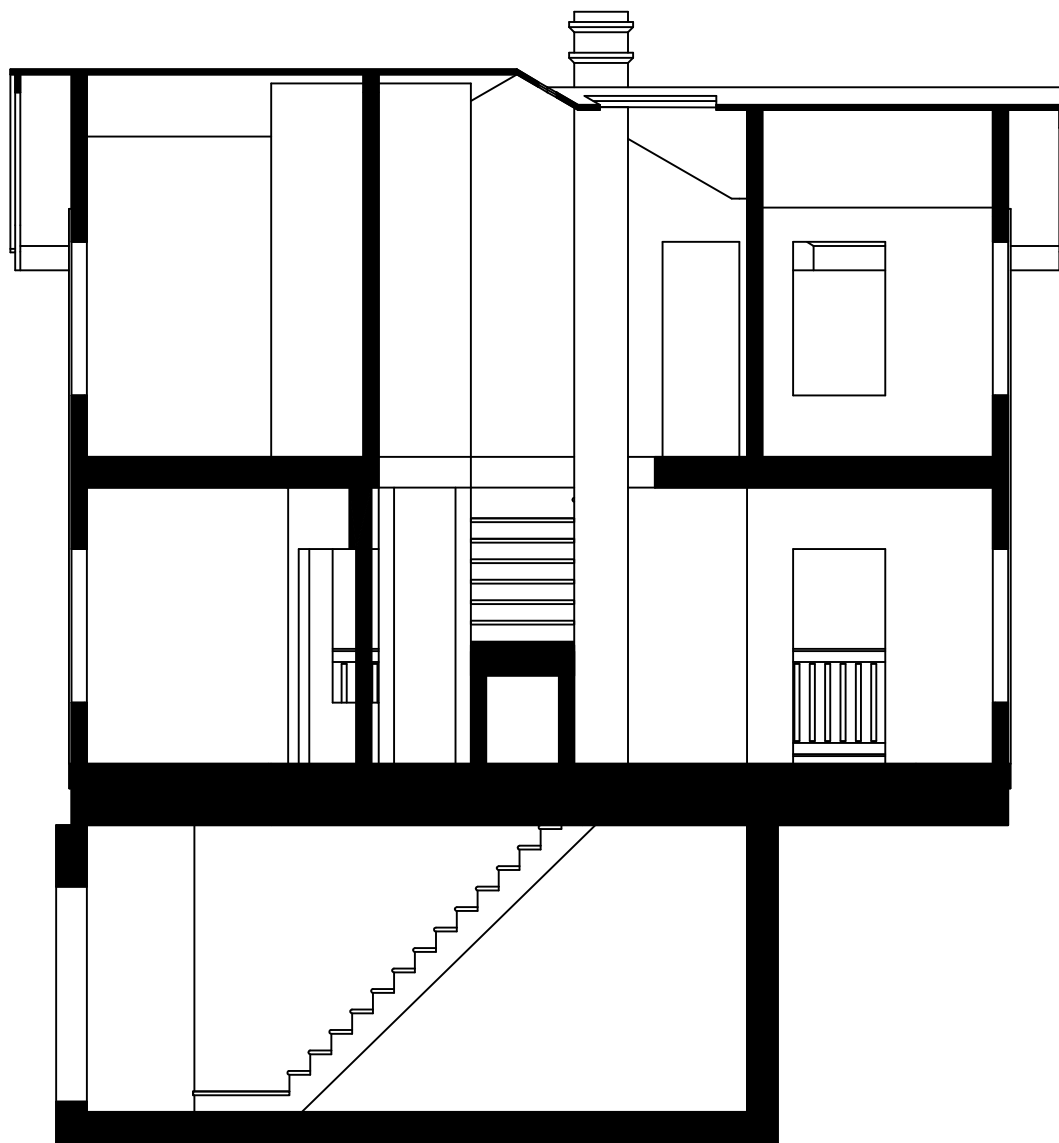
VIEW FROM THE WEST



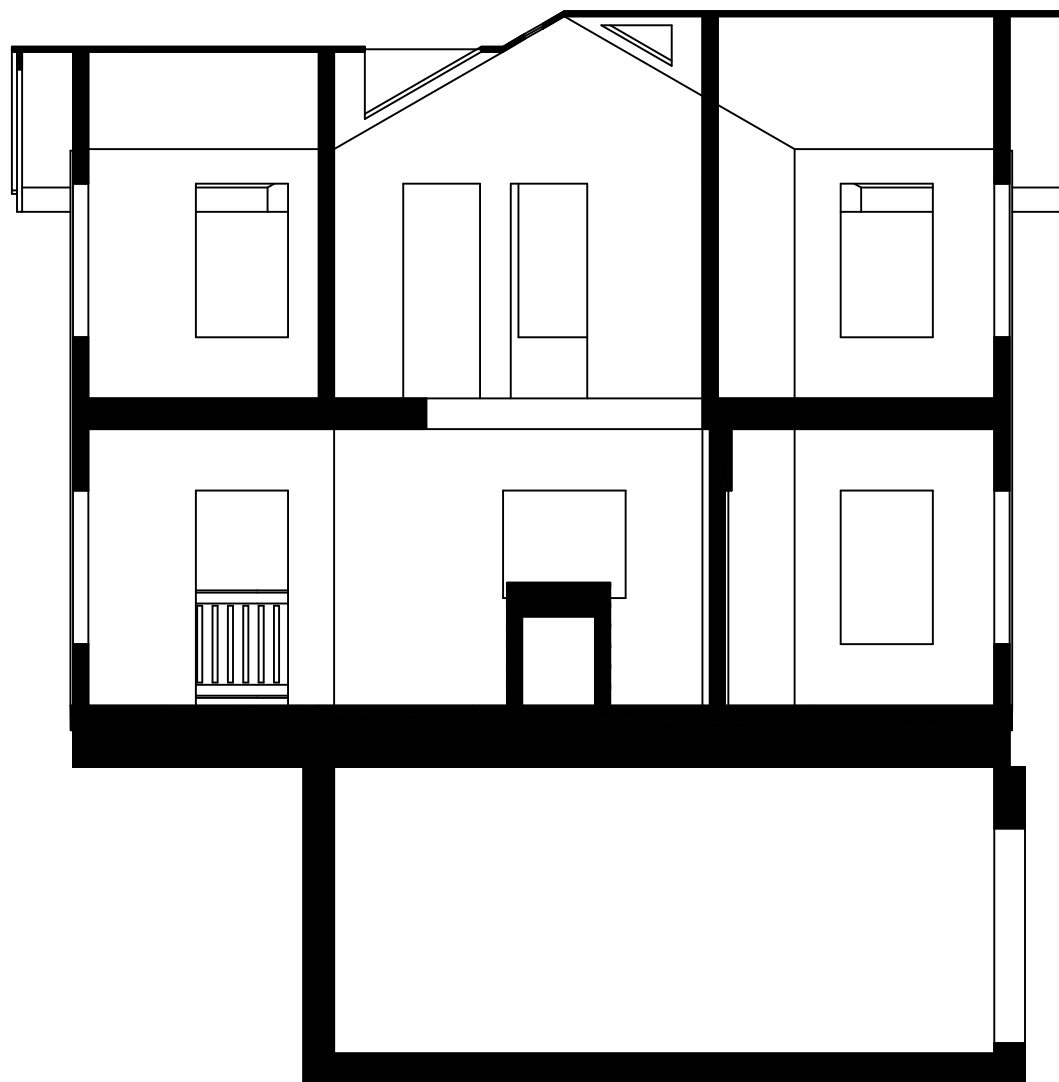
# SECTION PLAN - PAGE TWO

 1" = 10' - 0"

VIEW FROM THE NORTH



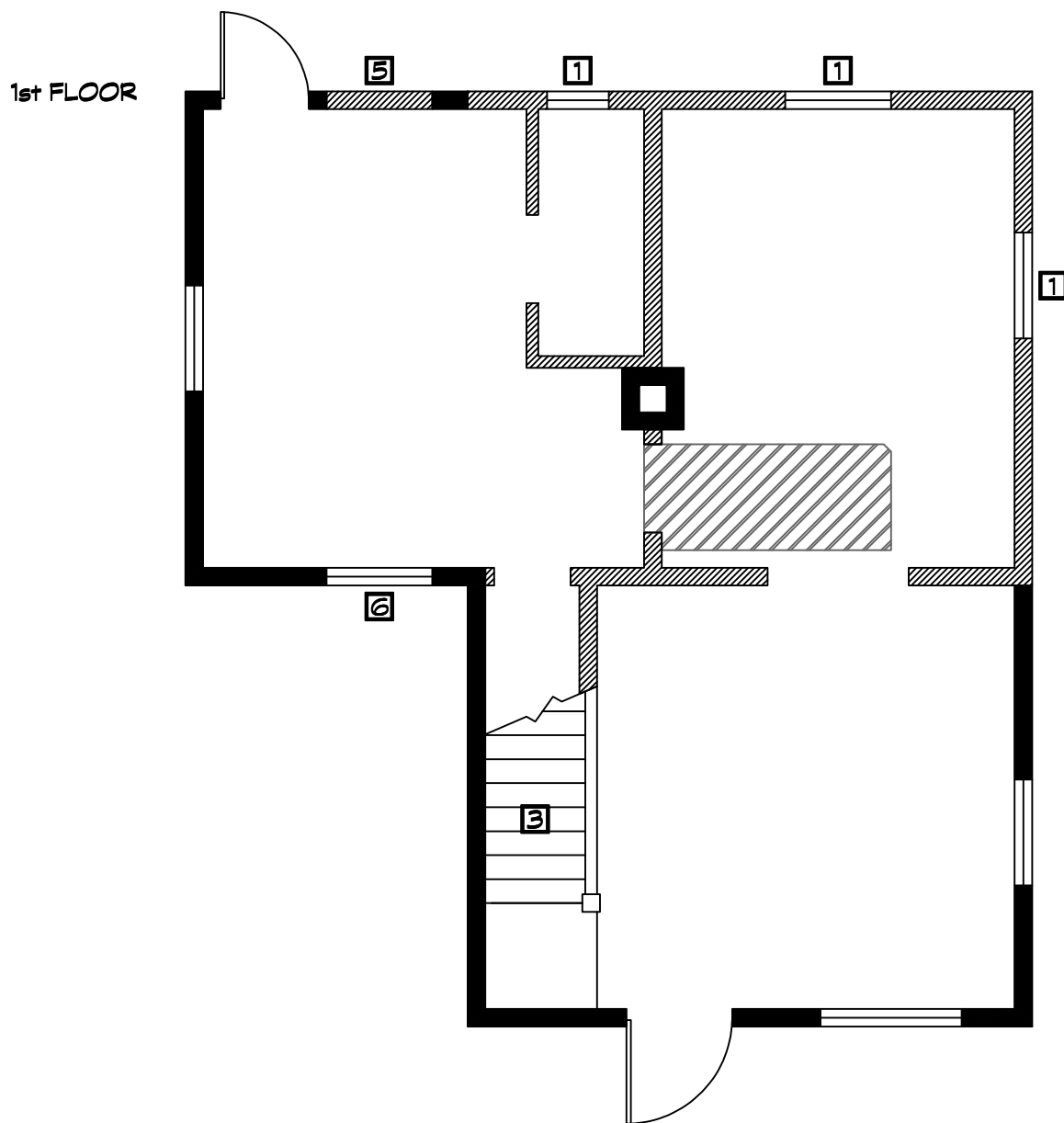
VIEW FROM THE SOUTH







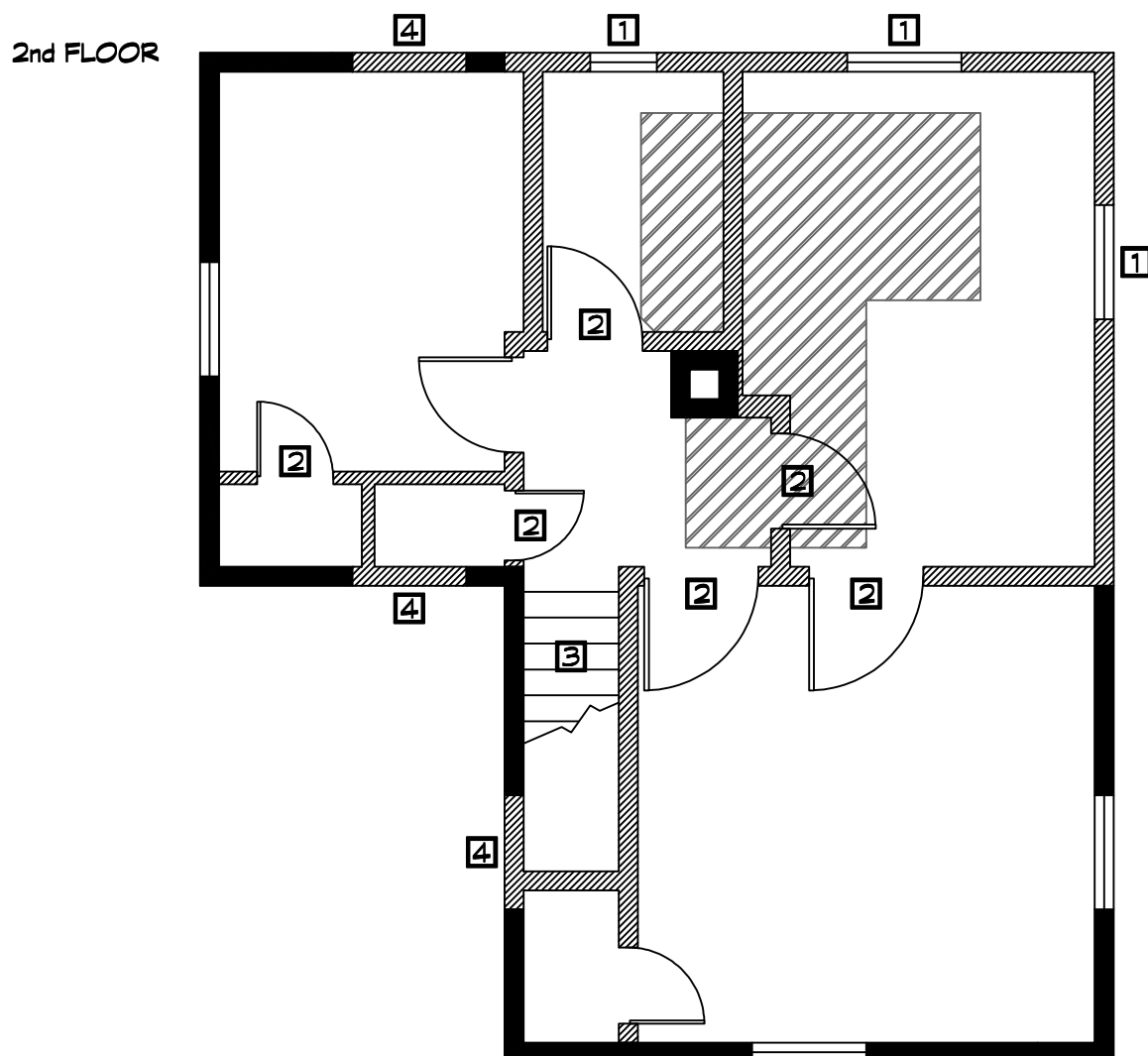
# DEMOLITION PLAN

 1" = 4'-0"



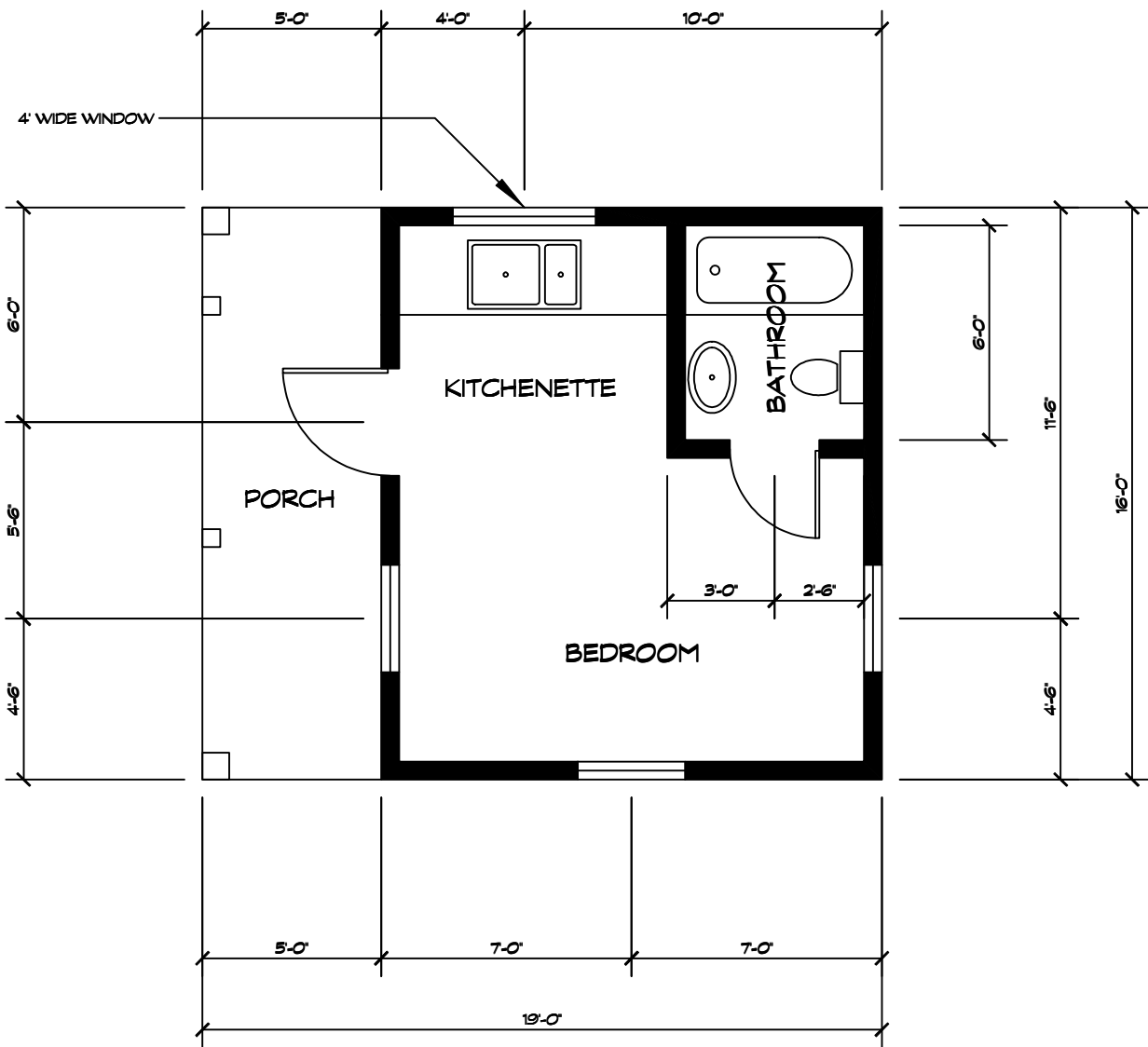
 WALLS TO BE REMOVED  
 FLOOR TO BE REMOVED

- 1 Windows to be removed. Frames are to be kept for reuse.
- 2 Doors to be removed and disposed of.
- 3 Stairs to be removed and disposed of.
- 4 Wall to be opened for a window.
- 5 Wall to be opened for a doorway.
- 6 Convert window opening into a doorway.



# FLOOR PLAN - GUEST HOUSE

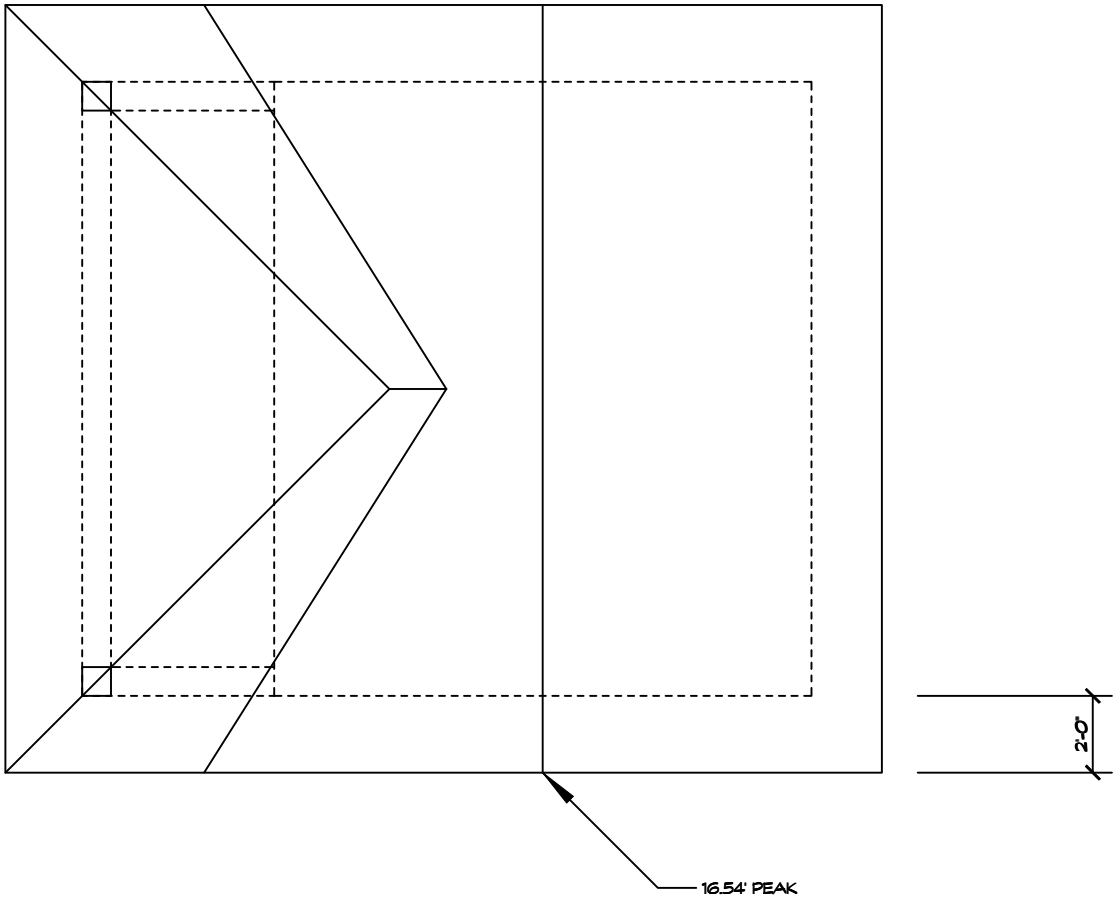
 1" = 4'-0"



**GENERAL NOTES**  
Unless otherwise noted, all windows are 3' wide  
Interior doors is 2'-6" wide  
Exterior door is 3' wide

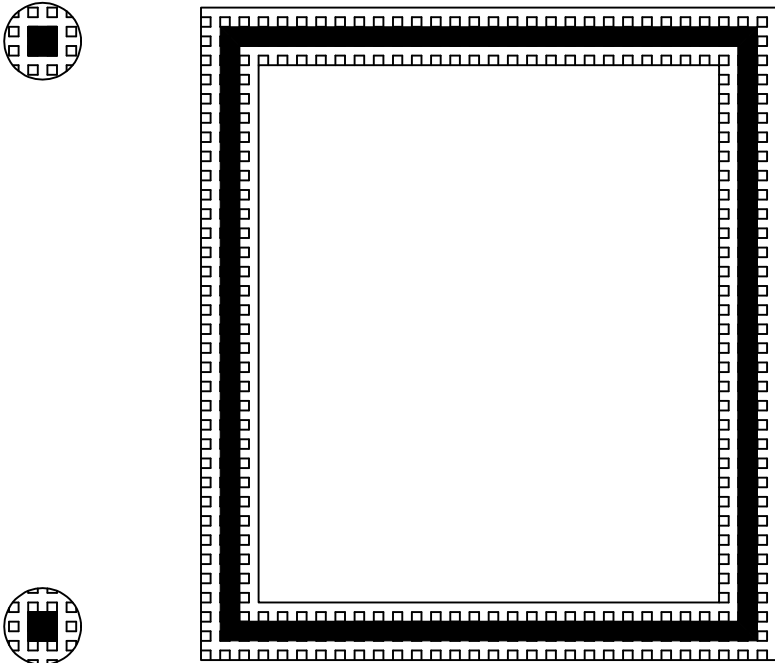
# ROOF PLAN - GUEST HOUSE

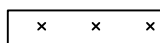
 1" = 4'-0"



# FOUNDATION PLAN - GUEST HOUSE

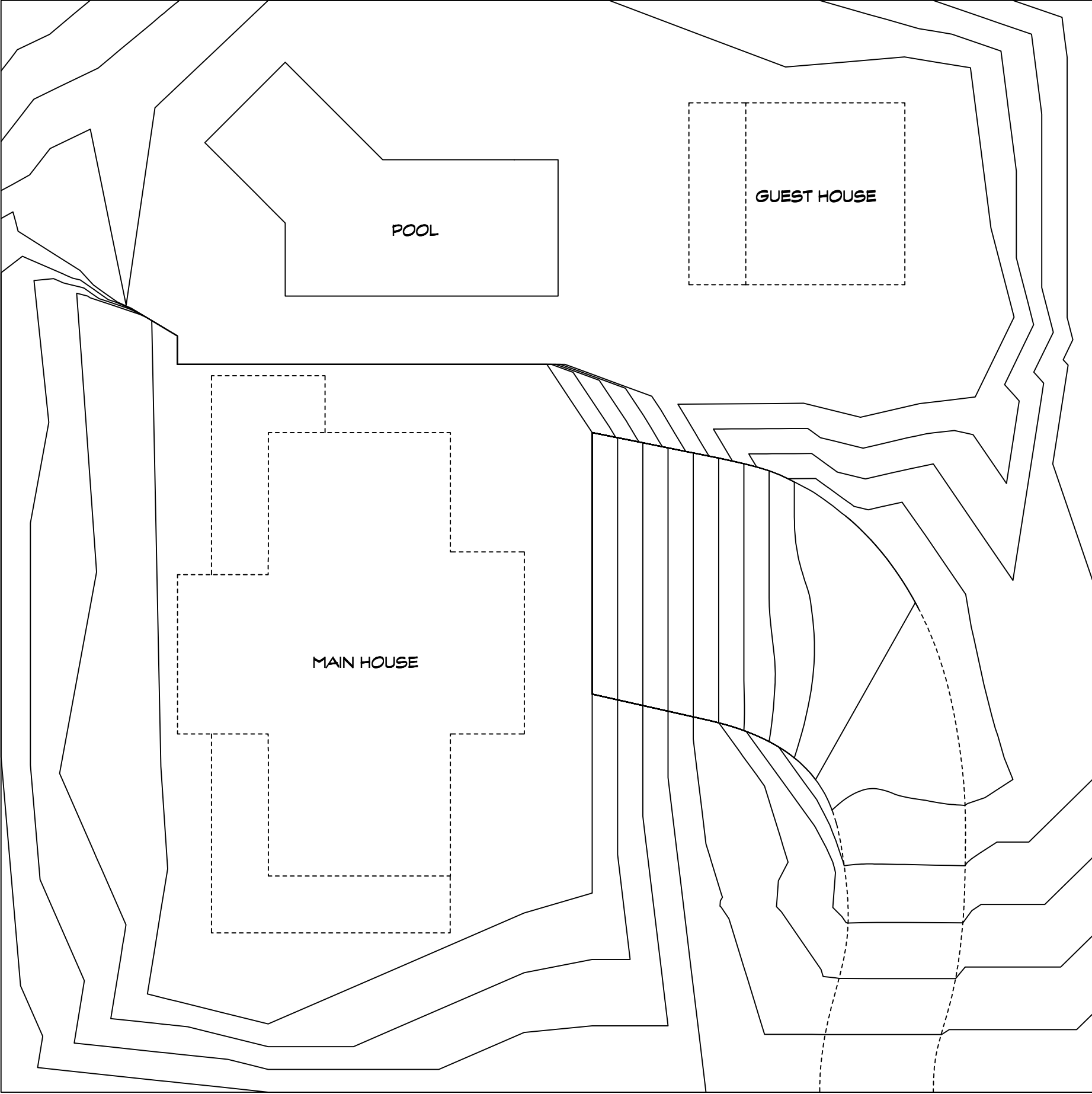
 1" = 4'-0"



-  = FOUNDATION
-  = FOOTER
-  = GARAGE FLOOR

# LANDSCAPE PLAN

 1" = 8'-0"



CONTOUR INTERVAL: 0'-6"